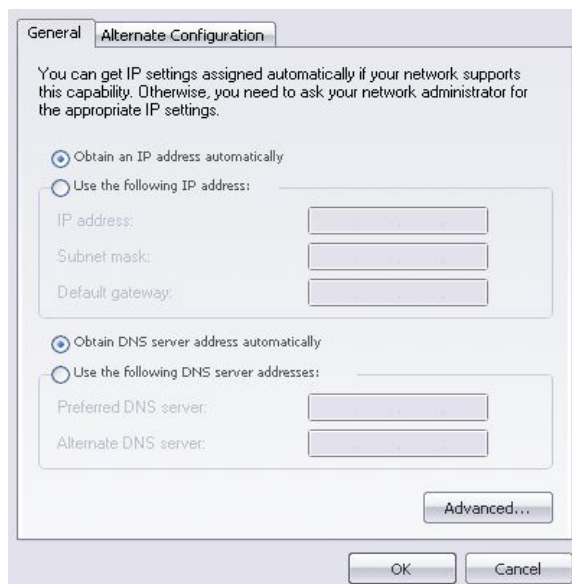


Povezivanje SpeedTouch 536/546 ADSL rutera putem LAN-a

Pre nego što krenete u podešavanje vašeg ADSL rutera, proverite da li ste ispravno povezali vaš računar i ADSL ruter. Ukoliko postoji veza između računara i ADSL rutera, *Ethernet* lampica na ruteru će svetleti zelenom bojom.

ADSL ruter se nalazi na IP adresi 192.168.1.254. Da bi ste pristupili ADSL ruteru, potrebno je da podesite par parametara u *Local Area Connection*-u mrežne kartice na koju ste povezali ruter. Kliknite desnim dugmetom miša na ikonicu i iz poneđenog menija odaberite *Properties*. U *This connection uses following items* nađite **Internet protocol** i kliknite na dugme *Properties*. Odaberite opcije *Obtain an IP address automatically* i *Obtain DNS server address automatically*. Kliknite na dugme *OK* a zatim se vratite na *Local Area Connection properties* prozor. Kliknite na *OK* da zatvorite prozor.



Ukoliko je sve podešeno kako treba, otvorite vaš web browser i ukucajte adresu <http://192.168.1.254>. Nakon što se otvori administrativni interface, kliknite na dugme *SpeedTouch* u meniju sa leve strane.



U sekciji *Pick a task* odaberite *Set Up*.

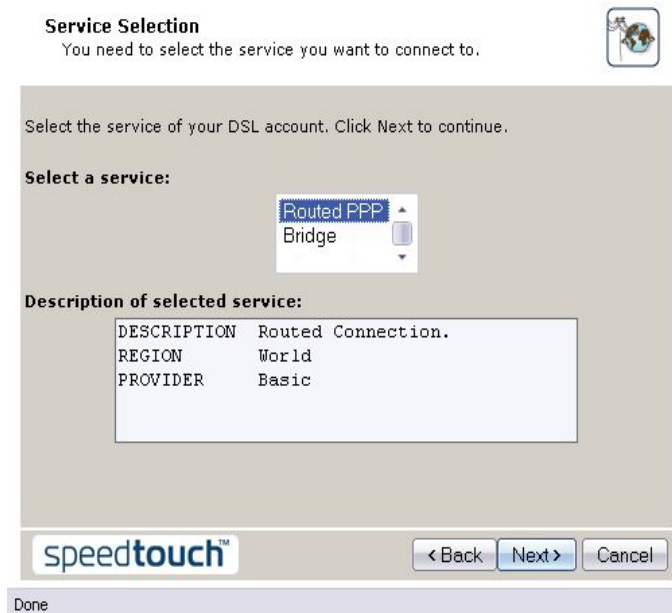
Pick a task...

- [➔ Set Up](#)
- [➔ Restart](#)
- [➔ Return to Factory Default Settings](#)
- [➔ View event logs](#)
- [➔ Check connectivity to the Internet](#)

Nakon kraćeg učitavanja, dobićete uvodni prozor *SpeedTouch Easy Setup*-a. Kliknite na dugme *Next*.



U *Select a service* odaberite **Routed PPP** i kliknite na dugme *Next*.



Za *VPI/VCI* odaberite **8.35**, a za *Connection Type* stavite **PPP over Ethernet**.

Routed Internet Connection
Specify the details of the Internet connection. All information should be provided by your ISP.

VPI/VCI: 8.35
Choose a VPI/VCI from the list

Connection Type:
 PPP over ATM (PPPoA)
 PPP over Ethernet (PPPoE)

speedtouch™ < Back Next > Cancel

Done

Upišite vaš username i password.

Internet Account Settings
Specify the details of your Internet Account. All information should be provided by your ISP.

User Name: adsluser@beograd.com
Enter your Internet connection user name.

Password: [REDACTED]
Enter your Internet connection password.

Confirm Password: [REDACTED]
Re-enter your password.

speedtouch™ < Back Next > Cancel

Done

Ukoliko želite, upišite password kojim zaštićujete podešavanja rutera.

Access Control
Specify user name and password to prevent unwanted access to the SpeedTouch management interface.

User Name: Administrator
Enter a user name.

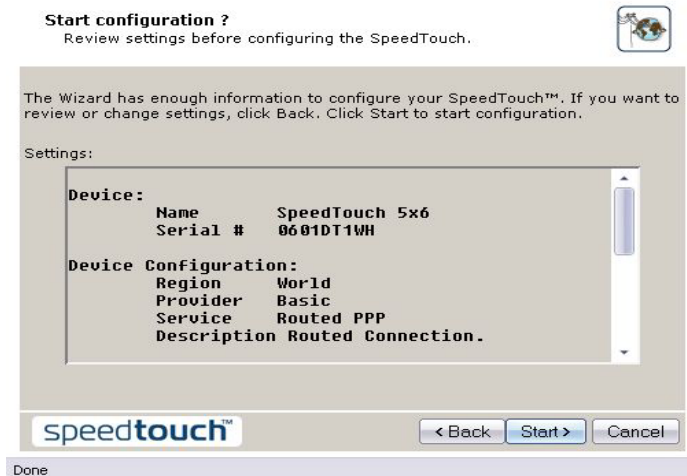
Password: [REDACTED]
Enter a password.

Confirm Password: [REDACTED]
Re-enter the password.

speedtouch™ < Back Next > Cancel

Done

Kliknite na dugme *Start* da bi ste snimili konfiguraciju.



Sačekajte dok se snimi konfiguracija vašeg rutera.



Kliknite na dugme *Finish* da bi ste zatvorili *Easy Setup*.

